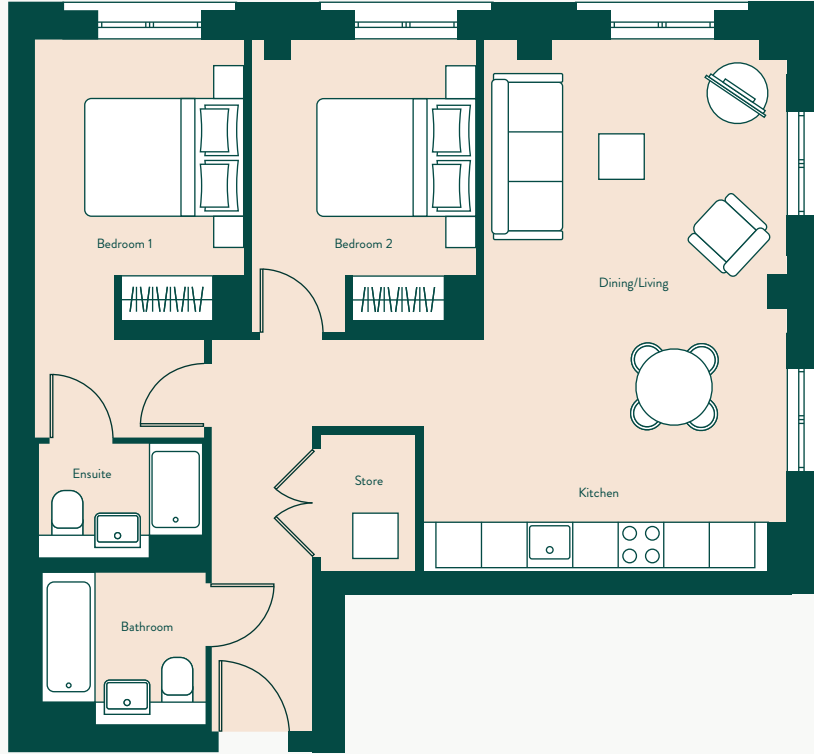


**FLOOR PLAN**



Disclaimer: Please note floor plan is not drawn to scale



**ACCOMMODATION COMPRISES**

- Entrance
- Open plan living and kitchen
- Separate bathroom & ensuite

**GOOD TO KNOW**

- Tenants are responsible for the payment of utilities as well as council tax
- Broadband Wi-Fi is set up for when you move in
- All tenancy applications subject to referencing

# 2 bedroom apartment typical furniture pack



## LIVING AREA

A selection of key pieces with sustainable stories from The Furniture Practice. Within the open-plan living area, the furniture includes a sofa, coffee table, T.V cabinet, dining room table with chairs. The kitchen features a Samsung Hob, oven and Beko washer/dryer, dishwasher and fridge/freezer.

## BEDROOM

The bedrooms are fitted with either a king or double size ottoman storage bed and bespoke bedside tables.



KING-SIZED BED  
& BEDSIDE TABLE



DINING TABLE  
& CHAIRS



T.V CABINET  
& ARMCHAIR



SOFA &  
COFFEE TABLE



## AMENITIES AND ADDED EXTRAS

All homes in New Acres come with these amenities and extras for free. Some may incur additional costs and licences. Please speak to the On-site Team.

DESIGNER



FURNITURE

PETS



WELCOME

RESIDENTS'



GYM

25M



RESIDENTS' LIDO

MAKE IT



YOUR OWN